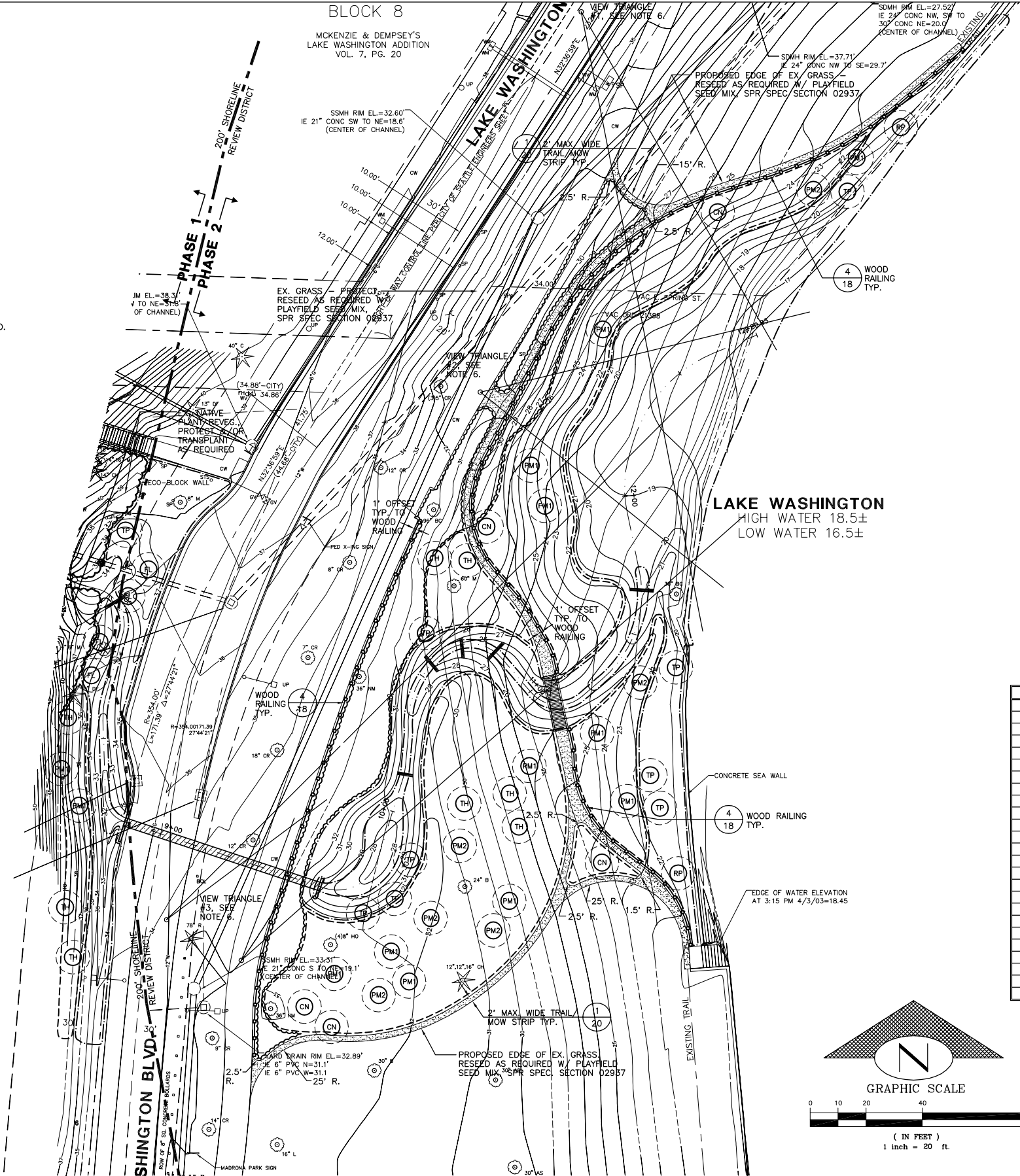


PLANT LEGEND: Phase 2

ABBREV./SYMBOL	QUANT.	BOTANICAL NAME; COMMON NAME
TREES		
		UPLAND TREE MIX: 40% S.F. COVERAGE; 12' O.C. MIN.; SHOWN INDIVIDUALLY
CN	5	15% CORNUS NUTALLII; PACIFIC DOGWOOD
PM1	13	45% PSEUDOTSUGA MENZIESII; DOUGLAS FIR, 2-3' HT.
PM2	6	15% PSEUDOTSUGA MENZIESII; DOUGLAS FIR, 4-5' HT.
TH	8	25% TSUGA HETEROPHYLLA; WESTERN HEMLOCK
		WETLAND TREE MIX: 30% S.F. COVERAGE; 12' O.C. MIN.; SHOWN INDIVIDUALLY
FL	4	25% FRAXINUS LATIFOLIA; OREGON ASH
RP	2	15% RHAMNUS PURSHIANA; CASCARA
TP	9	60% THUJA PLICATA; WESTERN RED CEDAR

GENERAL PLANTING NOTES:

- ALL INVASIVES REMOVAL, PLANTING AND SEEDING SHALL BE DONE BY VOLUNTEERS AND/OR OTHERS. EXCEPTION: PLAYFIELD GRASS SEEDING PER SPR SPEC SECTION 02937 SHALL BE DONE BY CONTRACTOR.
- FOR UNDERSTORY PLANTING PLAN, INCLUDING SHRUBS & GROUND COVERS, SEE SHEET 24A.
- FOR PLANTING DETAILS, SEE SHEET 25-26.
- FOR PLANT MATERIALS LIST (TOTAL FOR PHASE 2 PLANTING PLAN), SEE SHEET 26.
- FIELD ADJUSTMENTS OF TREE & OTHER PLANT MATERIAL LAYOUT TO MEET SPECIFIC SITE CONDITIONS ARE ANTICIPATED.
- PROVIDE VIEW CORRIDORS AS INDICATED ON THE PLAN. NO TREES OR LARGE SHRUB MASSES (MORE THAN 3 PLANTS) TALLER THAN 4 FEET MATURE HEIGHT SHALL BE PLANTED IN VIEW CORRIDORS. IN ADDITION, MAINTAIN VIEWS TO LAKE WASHINGTON & MT. RAINIER FROM GOLDMARK OVERLOOK.
- ADJUST LOCATIONS OF PLANT MATERIALS TO AVOID CONFLICT WITH EXISTING PLANTS, STRUCTURES, UNDERGROUND AND OVERHEAD UTILITY LINES AND EQUIPMENT, STREAM ENHANCEMENTS AND SITE FURNISHINGS; AND TO PROVIDE FOR VISIBILITY, PEDESTRIAN SAFETY, AND CLEARANCE FROM PAVING AND STREET EDGES.
- FOR INFORMATION AND COORDINATION WITH SITE WORK, STRUCTURES, AND CREEK ENHANCEMENTS, SEE GRADING & LAYOUT PLAN AND STREAM ENHANCEMENT DETAILS.
- ALL AREAS DISTURBED BY CONSTRUCTION SHALL BE RESTORED AS INDICATED OR REPAIRED TO ORIGINAL OR BETTER CONDITION.
- MULCH ALL PLANTING AREAS WITH MINIMUM 4" WOOD MULCH, EXCEPT WITHIN CREEK CHANNEL, FRESHWATER WETLAND OR LAKE. AFTER COMPLETION OF PLANTING AND PRIOR TO SEEDING, RE-MULCH PLANTING AREAS AS REQUIRED TO ACHIEVE 4 INCH DEPTH OF WOOD MULCH.
- SEED AREAS WITH SEED MIX INDICATED. DO NOT SEED CREEK CHANNEL, FLOODPLAIN, WETLAND OR OVER OPEN WATER.



>>>>CAUTION<<<<
CALL BEFORE YOU DIG!

NOT LESS THAN TWO OR MORE THAN TEN BUSINESS DAYS
PRIOR TO COMMENCING EXCAVATION OR DEMOLITION,
SECURE THE SERVICES OF A COMMERCIAL UNDERGROUND
UTILITIES LOCATOR SERVICE TO IDENTIFY BELOW-GROUND
IMPROVEMENTS THAT MAY NOT BE INDICATED ON THE
DRAWINGS. FOR IRRIGATION SYSTEMS, CALL SEATTLE
PARKS PLUMBING SHOP (206 684 7070)

>>800 424 5555<<

EXISTING LEGEND

- CONTOUR LINE
- RIGHT OF WAY/PROPERTY LINE
- ASPHALT ROAD
- PEDESTRIAN TRAIL
- MONUMENT IN CASE
- STORM DRAIN MANHOLE
- CATCH BASIN
- FIRE HYDRANT
- UTILITY POLE
- CONIFEROUS TREE } SEE EXISTING TREE LEGEND THIS SHEET.
- DECIDUOUS TREE }
- PROTECT EXISTING TREE
- REMOVE TREE

PROPOSED LEGEND

- CONTOUR LINE
- CREEK CENTERLINE
- CREEK CULVERT
- PEDESTRIAN TRAIL, WIDTH AS NOTED
- BRIDGE
- OVERLOOK DECK
- LOG WEIR OR BED CONTROL LOG
- 200' SHORELINE DISTRICT BOUNDARY
- WOOD RAILING

EXISTING TREE LEGEND

ABBREVIATION	TREE SPECIES; COMMON NAME; BOTANICAL NAME
A	OREGON ASH; FRAXINUS LATIFOLIA
AL	RED ALDER; ALNUS RUBRA
AS	ORNAMENTAL ASH SPECIES; FRAXINUS SPECIES
B	BIRCH SPECIES; BETULA SPECIES
BC	BLACK COTTONWOOD; POPULUS TRICHOCARPA
BE	BOX ELDER; ACER NEGUNDO
C	WESTERN RED CEDAR; THUJA PLICATA
CB	COPPER BEECH; FAGUS SYLVATICA 'ATROPURPUREA'
CH	CYPRESS SPECIES; CHAMAECYPARIS SPECIES
CR	ORNAMENTAL CHERRY; PRUNUS 'KWANZAN' OR SIM.
DC	DEODAR CEDAR; CEDRUS DEODARA
DF	DOUGLAS FIR; PSEUDOTSUGA MENZIESII
F	TRUE FIR SPECIES; ABIES SPECIES
H	WESTERN HEMLOCK; TSUGA HETEROPHYLLA
HO	HOLLY SPECIES; ILEX SPECIES
HW	HAWTHORN SPECIES; CRATAEGUS SPECIES
L	LITTLE-LEAF LINDEN; TILIA CORDATA
M	BIGLEAF MAPLE; ACER MACROPHYLLUM
MA	MOUNTAIN ASH; SORBUS SPECIES
NM	NORWAY MAPLE; ACER PLATANOIDES
P	ORNAMENTAL PINE SPECIES; PINUS SPECIES
SP	ORNAMENTAL SPRUCE SPECIES; PICEA SPECIES
S	GIANT SEQUOIA; SEQUOIA GIGANTEUM
R	COAST REDWOOD; SEQUOIA SEMPERVIRENS
Z	ZELKOVA SPECIES

FILE NAME: (UPDATED BY) DATE: 12/12/08
PROJECT: 3529-WV, SW-007, 453056W



Engineering Planning Surveying
Penhallegon Associates Consulting Engineers, Inc.
750 Sixth Street South Kirkland, WA 98033
Ph: (425) 827-2014 1-800-945-9408 www.pacengr.com
Kirkland • Seattle Fax: (425) 827-5043

GAYNOR, Inc.
Seattle, WA

5			
4			
3			
2			
1			
NO.	REVISION - AS BUILT	DATE	

REVIEWED: PARK ENGINEER DATE
All work done in accordance with the City of Seattle Standard Plans and Specifications in effect on the date shown above, and supplemented by Special Provisions.



MADRONA PARK
CREEK DAYLIGHTING
& RESTORATION

TREE
PLANTING PLAN
PHASE 2

DESIGNED KN/PG
DRAWN MAA/CPS
CHECKED KN/PG
ORDINANCE NO.
CONTRACT NO.
SCALE 1" = 20'

DATE 4/2006
DESIGN REVIEW
SHEET 24 OF 28
24

