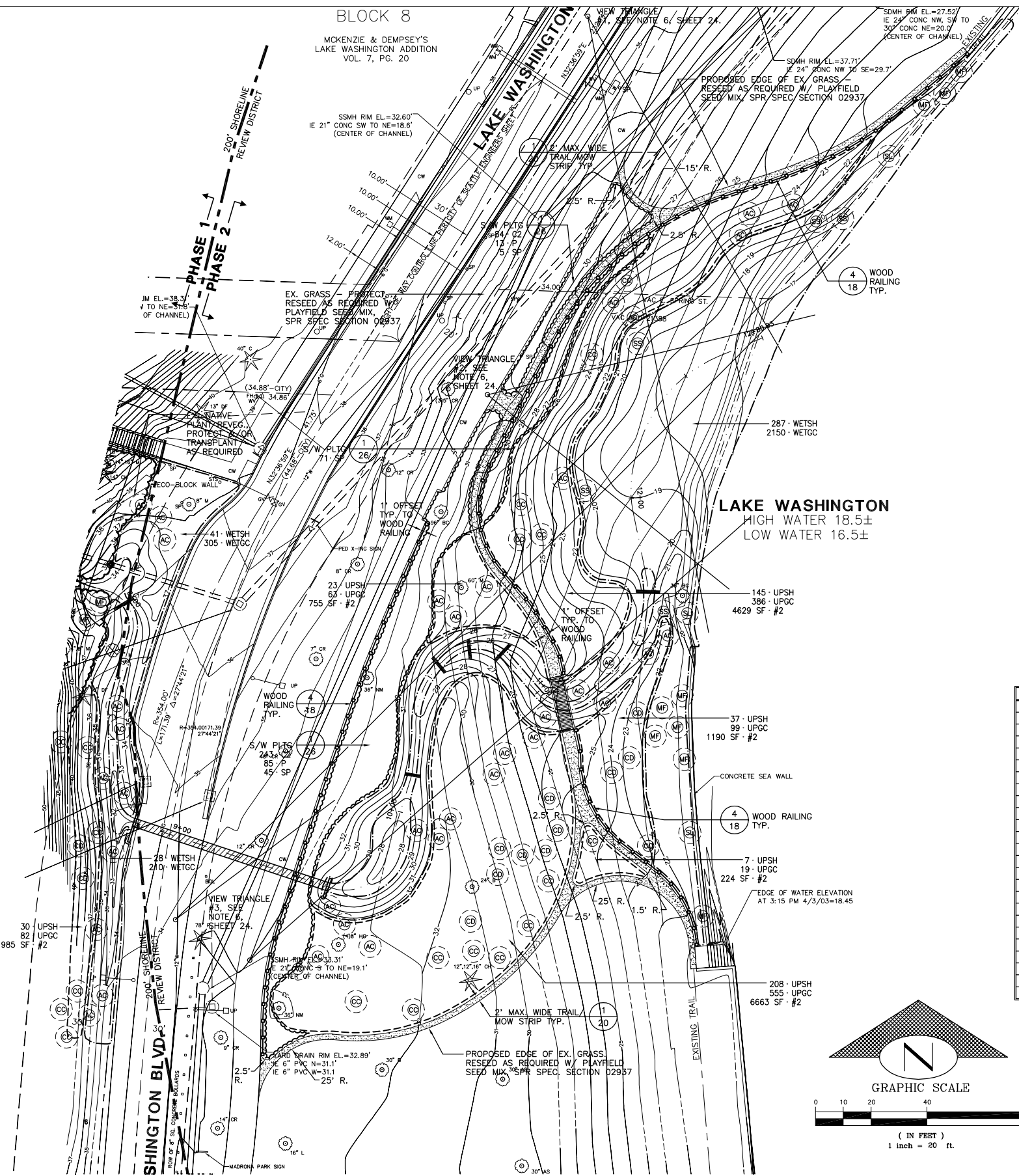


PLANT LEGEND: Phase 2

ABBREV./SYMBOL	QUANT.	BOTANICAL NAME; COMMON NAME
UNDERSTORY TREES/SHRUBS/GROUNDCOVERS		
AC	21	40% ACER CIRCINATUM; VINE MAPLE
CC	19	35% CORYLUS CORNUTA; HAZELNUT
CD	13	25% CRATAEGUS DOUGLASSII; BLACK HAWTHORN
UPSH	23	5% AMELANCHIER ALNIFOLIA; WESTERN SERVICEBERRY
(14,446 SF)	45	10% MAHONIA AQUIFOLIUM; TALL OREGON GRAPE
	23	5% OSMORHIZA SPECIOSA; OSOBERY
	45	10% PHILADELPHUS LEWISII; WESTERN MOCKORANGE
	23	5% RHODODENDRON MACROPHYLLUM; PACIFIC RHODODENDRON
	45	10% RIBES SANGUINEUM; RED-FLOWERING CURRANT
	23	5% ROSA GYMNOCARPA; BALD HIP ROSE
	23	5% ROSA NUTKANA; NOOTKA ROSE
	67	15% RUBUS PARVIFLORA; THIMBLEBERRY
	23	5% SAMBUCUS RACEMOSA; RED ELDERBERRY
	67	15% SYMPHORICARPOS ALBUS; SNOWBERRY
	22	5% VACCINIUM OVATUM; EVERGREEN HUCKLEBERRY
	21	5% VIBURNUM EDULE; MOOSEWOOD
UPGC	421	UPLAND GROUNDCOVER MIX: 75% S.F. COVERAGE; 3' O.C. MIN.*
(14,446 SF)	301	35% GAULTHERIA SHALLON; SALAL
	482	25% MAHONIA NERVOSA; LONG-LEAVED MAHONIA
		40% POLYSTICHUM MUNITUM; SWORD FERN
		WETLAND UNDERSTORY TREE MIX: 30% S.F. COVERAGE; 8' O.C. MIN.; SHOWN INDIVIDUALLY
AC	16	45% ACER CIRCINATUM; VINE MAPLE
MF	11	30% MALUS FUSCA; WESTERN CRABAPPLE
SL	3	10% SALIX LASIANDRA; PACIFIC WILLOW
SS	5	15% SALIX SITCHENSIS; SITKA WILLOW
WETSH	36	WETLAND SHRUB MIX: 40% S.F. COVERAGE; 4' O.C. MIN.*
(14,217 SF)	53	10% CORNUS STOLONIFERA; REDTIG DOGWOOD
	53	15% LONICERA INVOLUCRATA; TWINBERRY
	71	20% PHYSOCARPUS CAPITATUS; WESTERN NINEBARK
	53	15% ROSA PISOCARPA; CLUSTERED WILD ROSE
	89	25% RUBUS SPECTABILIS; SALMONBERRY
	36	10% SAMBUCUS RACEMOSA; RED ELDERBERRY
	18	5% VACCINIUM PARVIFOLIUM; RED HUCKLEBERRY
WETGC	53	WETLAND GROUNDCOVER AND EMERGENT MIX: 75% S.F. COVERAGE; 2' O.C. MIN.*
(14,217 SF)	40	2% ATHYRIUM FELIX-FEMINA; LADY FERN
	533	1.5% BLECHUM SPICANT; DEER FERN
	266	20% CAREX OBNUPTA; SLOUGH SEDGE
	400	10% CAREX STIPATA; SAWBEAK SEDGE
	27	15% JUNCUS ENSIFOLIUS; DAGGER-LEAF RUSH
	13	1% LYSICHTON AMERICANUS; SKUNK CABBAGE
	400	0.5% OPLOPANAX HORRIDUM; DEVIL'S CLUB
	533	15% SPARGANIUM EMERSUM; BURREED
	400	20% SCIRPUS ACUTUS; HARDSTEM BULRUSH
	400	15% SCIRPUS MICROCARPUS; SMALL-FRUITED BULRUSH
SEED MIXES		
#2	.35 AC	NATIVE LUPINE-WILDFLOWER MIX
SIDEWALK EDGE PLANTING		
S/W PLTG	327	SEE ALSO DETAIL 1, SHEET 26.
C2	98	CORNUS STOLONIFERA 'KELSEY'; KELSEY'S DWARF REDTIG DOGWOOD, 2' O.C. SPACING
P	98	POLYSTICHUM MUNITUM; SWORD FERN, 2' O.C. SPACING
SP	121	SALIX PURPUREA NANA; DWARF ALASKA BLUE WILLOW, 4' O.C. SPACING

*FOR PLANT SPECIES MIXES LISTED ABOVE, PROVIDE MASSES OF LIKE SPECIES IN QUANTITIES OF 3-15 PER MASS; ARRANGE MASSES IN INTERTWINING ORGANIC SHAPES FOR NATURALISTIC EFFECT.

NOTE: FOR GENERAL PLANTING NOTES, SEE SHEET 24.



>>>>CAUTION<<<<
CALL BEFORE YOU DIG!
 NOT LESS THAN TWO OR MORE THAN TEN BUSINESS DAYS PRIOR TO COMMENCING EXCAVATION OR DEMOLITION, SECURE THE SERVICES OF A COMMERCIAL UNDERGROUND UTILITIES LOCATOR SERVICE TO IDENTIFY BELOW-GROUND IMPROVEMENTS THAT MAY NOT BE INDICATED ON THE DRAWINGS. FOR IRRIGATION SYSTEMS, CALL SEATTLE PARKS PLUMBING SHOP (206 684 7070)
>>800 424 5555<<

EXISTING LEGEND

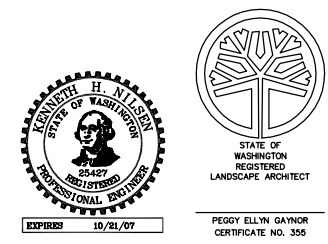
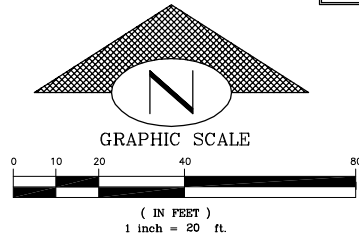
- CONTOUR LINE
- RIGHT OF WAY/PROPERTY LINE
- ASPHALT ROAD
- PEDESTRIAN TRAIL
- MONUMENT IN CASE
- STORM DRAIN MANHOLE
- CATCH BASIN
- FIRE HYDRANT
- UTILITY POLE
- CONIFEROUS TREE } SEE EXISTING TREE LEGEND THIS SHEET.
- DECIDUOUS TREE }
- PROTECT EXISTING TREE
- REMOVE TREE

PROPOSED LEGEND

- CONTOUR LINE
- CREEK CENTERLINE
- CREEK CULVERT
- PEDESTRIAN TRAIL, WIDTH AS NOTED
- BRIDGE
- OVERLOOK DECK
- LOG WEIR OR BED CONTROL LOG
- 200' SHORELINE DISTRICT BOUNDARY
- WOOD RAILING

EXISTING TREE LEGEND

ABBREVIATION	TREE SPECIES; COMMON NAME; BOTANICAL NAME
A	OREGON ASH; FRAXINUS LATIFOLIA
AL	RED ALDER; ALNUS RUBRA
AS	ORNAMENTAL ASH SPECIES; FRAXINUS SPECIES
B	BIRCH SPECIES; BETULA SPECIES
BC	BLACK COTTONWOOD; POPULUS TRICHOCARPA
BE	BOX ELDER; ACER NEGUNDO
C	WESTERN RED CEDAR; THUJA PLICATA
CB	COPPER BEECH; FAGUS SYLVATICA 'ATROPURPUREA'
CH	CYPRESS SPECIES; CHAMAECYPARIS SPECIES
CR	ORNAMENTAL CHERRY; PRUNUS 'KWANZAN' OR SIM.
DC	DEODAR CEDAR; CEDRUS DEODARA
DF	DOUGLAS FIR; PSEUDOTSUGA MENZIESII
F	TRUE FIR SPECIES; ABIES SPECIES
H	WESTERN HEMLOCK; TSUGA HETEROPHYLLA
HO	HOLLY SPECIES; ILEX SPECIES
HW	HAWTHORN SPECIES; CRATAEGUS SPECIES
L	LITTLE-LEAF LINDEN; TILIA CORDATA
M	BIGLEAF MAPLE; ACER MACROPHYLLUM
MA	MOUNTAIN ASH; SORBUS SPECIES
NM	NORWAY MAPLE; ACER PLATANOIDES
P	ORNAMENTAL PINE SPECIES; PINUS SPECIES
SP	ORNAMENTAL SPRUCE SPECIES; PICEA SPECIES
S	GIANT SEQUOIA; SEQUOIA GIGANTEUM
R	COAST REDWOOD; SEQUOIA SEMPERVIRENS
Z	ZELKOVA SPECIES



FILE NAME: (UPDATED BY) 12/12/08
 PLOTS: 3529-REV, 306-DIG, 433355W

Engineering Planning Surveying
Penhallegon Associates Consulting Engineers, Inc.
 750 Sixth Street South Kirkland, WA 98033 www.pacoenr.com
 Pki: (425) 827-2014 1-800-945-9408
 Kirkland - Seattle Fax: (425) 827-5043

GAYNOR, Inc.
 Seattle, WA

NO.	REVISION - AS BUILT	DATE
5		
4		
3		
2		
1		

REVIEWED: _____ DATE _____
 PARK ENGINEER
 All work done in accordance with the City of Seattle Standard Plans and Specifications in effect on the date shown above, and supplemented by Special Provisions.



MADRONA PARK CREEK DAYLIGHTING & RESTORATION

UNDERSTORY PLANTING PLAN PHASE 2

DESIGNED KN/PG	DATE 4/2006
DRAWN MAA/CPS	DESIGN REVIEW
CHECKED KN/PG	
ORDINANCE NO.	SHEET 24 OF 28
CONTRACT NO.	24A
SCALE 1" = 20'	