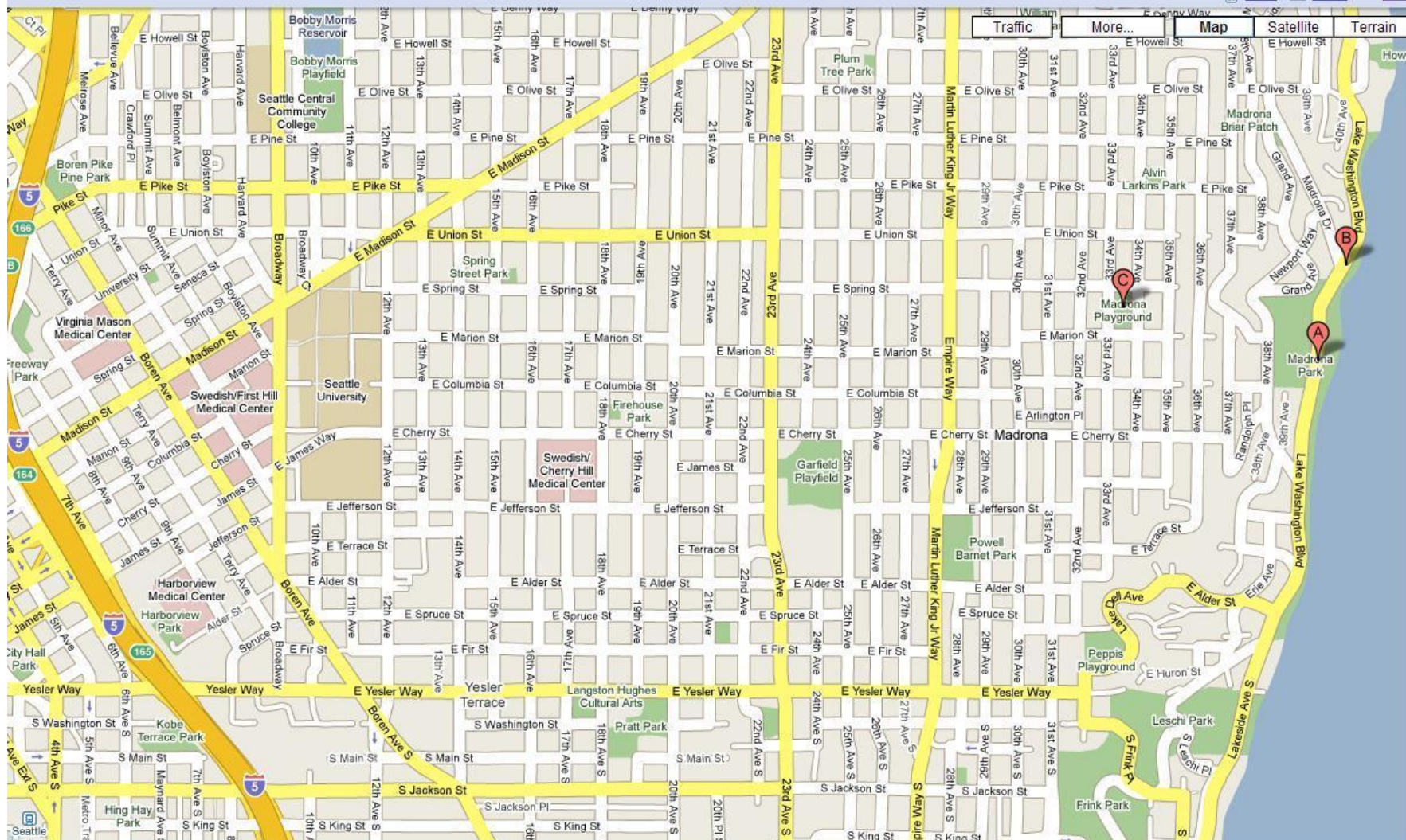


Daylighting Madrona Creek

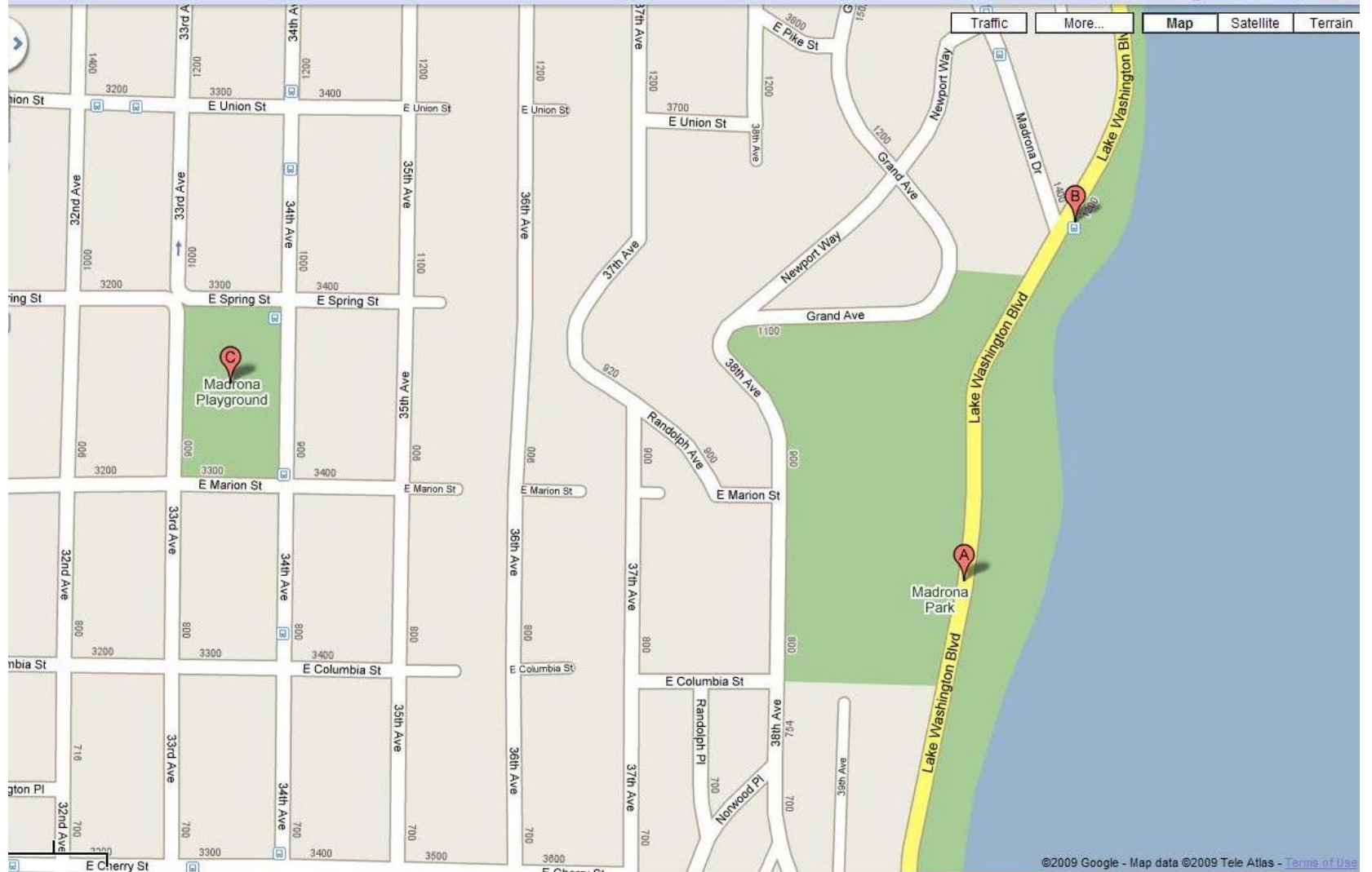
It takes a neighborhood

Madrona Park

- 9 wooded hillside acres above Lk Wa, 2 creeks, (~) 30 mature conifers, lots of ivy, blackberry, 200 vertical feet sloping up from lake.
- Very little conifer regeneration (as in other city natural areas)
- Before FOMW: The Woods had long been neglected. It was full of eroded social trails, invasive plants, and at times some sketchy activity.



Madrona Park: on either side of Lk Wa Blvd due east of downtown.



Streets get weird near the lake due to hills



Trail Repair above very steep “chute”



Newly cleared and planted in foreground. Still bad in background.

Friends of Madrona Woods

- We are a subcommittee of the Madrona Community Council (a 501 c3)
- 1997-8: formation, public input phase
- 1999: master use action plan (Peggy Gaynor), trail repair/construction, begin restoration
- 2000-2006: environmental education program
- 2005-2009: Madrona Creek daylighting project
- 2008-2010: Daylighting proj. maintenance
- 2005- : further restoration with help of Green Seattle Partnership

Neighborhood Support

- Initial public review was positive.
- About \$50K in total contributions
- Neighbors (other than core volunteers) occasionally join in our work parties.
- People like to use well-maintained natural spaces.
- Our treasurer recently retired, a new neighbor has stepped up.
- We can always use more help. We're a victim of our own success.

Help From “Stewardship Community”

- GSP: don't just count volunteer hours, measure results. Prioritize work. Work on a larger scale. Maintenance is vital. Erosion control workshop.
- Seattle Urban Nature (SUN): vegetation survey, monitoring protocols, prioritize removal of worst invasive plants.
- WNPS: botany, plant id, plant habitats, propagation techniques, how to run a work party.



Oceanspray



Goat's Beard



Trillium



Ninebark

Daylighting Project Overview

- Main funding motivation: fish habitat.
- Before: Madrona Creek exists only in pieces and is submerged (twice!) west of Lk Wa Blvd.
- Before: The lakeshore consists of grass sloping down to a seawall.
- After: The creek flows aboveground (2 culverts) on public land $\frac{1}{4}$ mile from source to lake.
- After: At its mouth the seawall is replaced by a wetland; park users can observe the creek in a $\frac{2}{3}$ acre lakeside natural area.
- 8,000 plants planted by volunteers.

Daylighting Construction

- Construction began at the lakeshore.
- First phase “connected” lower Madrona Creek across Lk Wa Blvd to the lake – not enough water for year-round flow.
- Second phase connected upper creek, resulting in full flow to lake.
- Fundraising and grant proposals done continuously for 4 years. Money went out as fast as it came in. No cost overruns (from bid), but project was well over original budget.

Peggy Gaynor

- Landscape architect: Gaynor Inc
- No Peggy – no daylighting.
- Has worked with FOMW for 10 years.
- Managed all design, permitting, construction, grant proposals, plant layout.
- Huge amount of pro-bono hours.
- Other projects: Ravenna, Meadowbrook.

Project Timeline

(Green: good Red: not so good)

Year(s)	Tasks	Grants
2005	Project survey and design	Starflower, King Co Waterworks
2006	Parks Dept approval, permitting (Army Corps Eng, Seattle DPD)	Seattle AHMG, King Co WW
2007	Phase 1 construction (culvert across Lk Wa Blvd, lakeside grading). Planting.	NOAA, King Cons Dist, Fish America, AHMG
2008	Planting. Phase 2 construction (culvert across 38 th).	Seattle DON, AHMG
2009	Bridge construction, final planting.	Seattle DON
2008-10	Maintenance/monitoring	Seattle AHMG



Removing catch basin above 38th



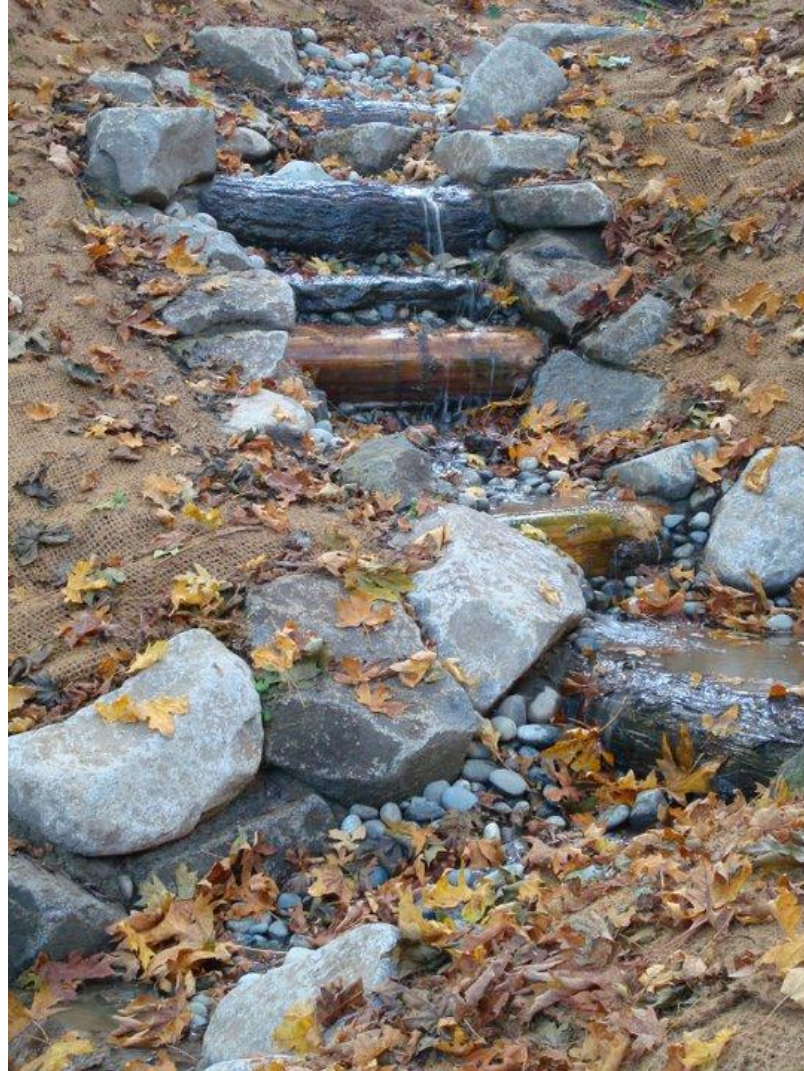
Culvert trench under 38th. Notice how sandy the soil is here.



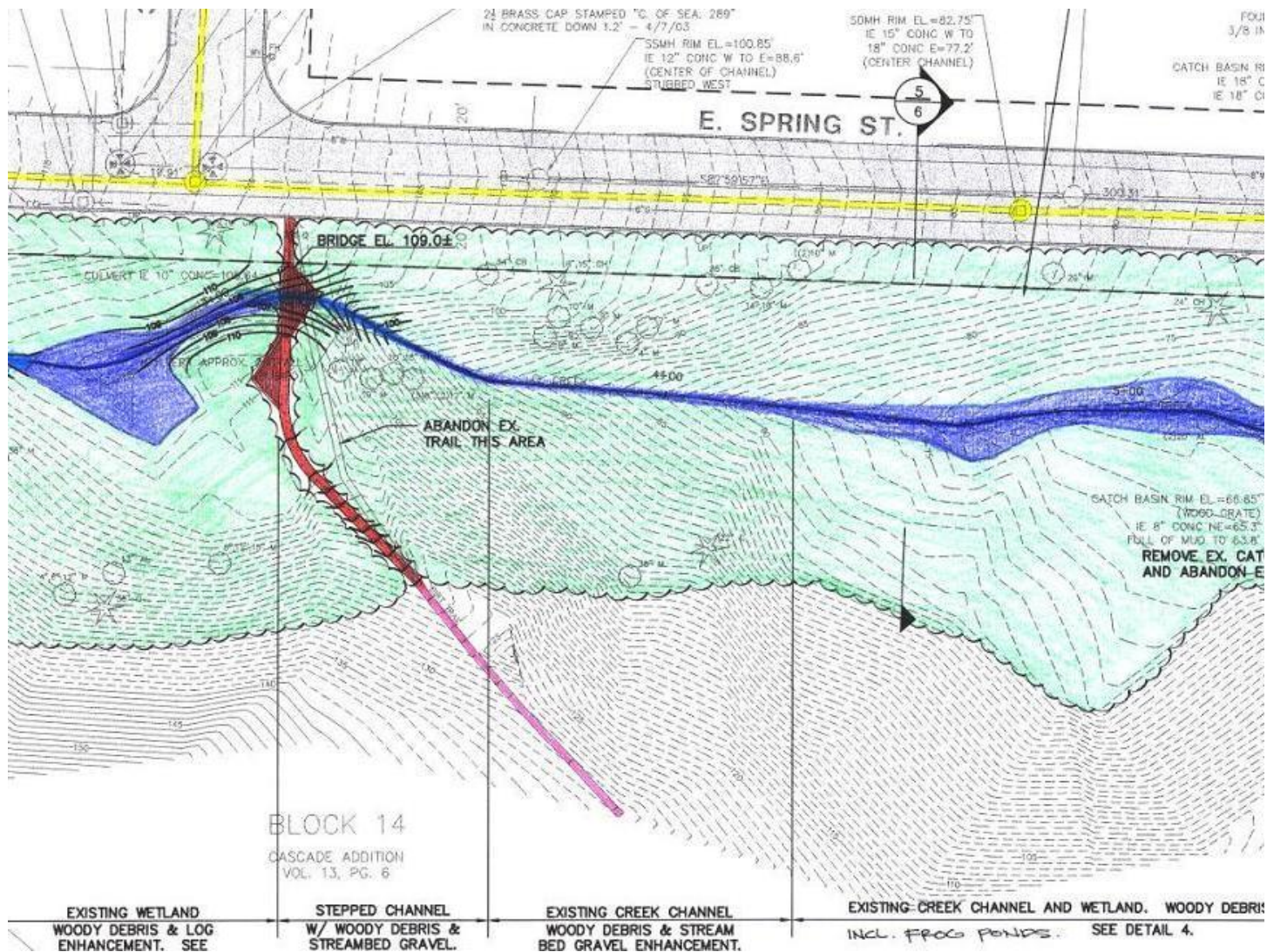
Madrona Creek above 38th (during construction)



Rock feature below 38th



Below rock feature.



Creek crosses under (red) trail, runs along Spring St.



Leveling a log weir.



Looking upstream.



Enjoying lakeside trail.

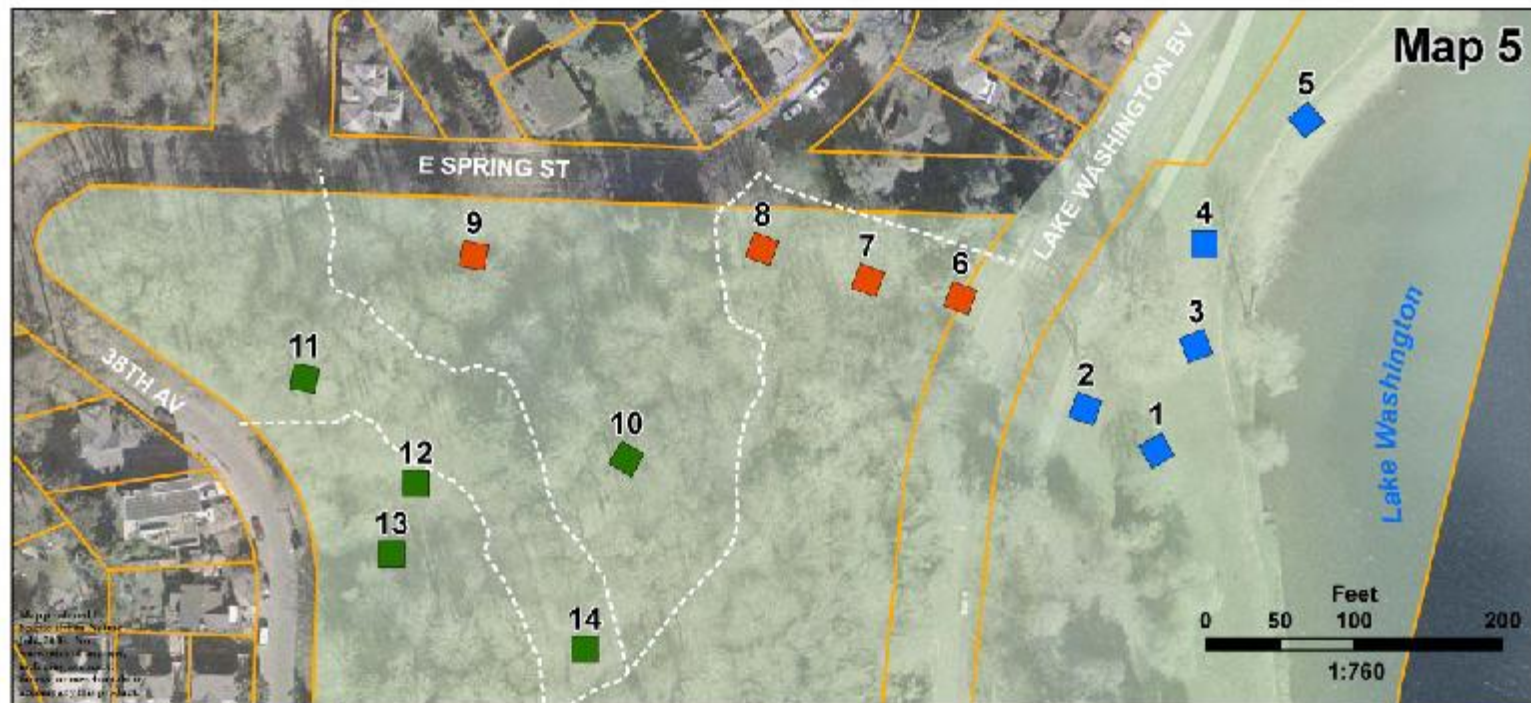


The cove in autumn.

Monitoring Program

- Plots, database, and protocols provided by SUN
- 6 2-person teams of volunteers monitor a total of 15 24 sq meter plots.
- Estimate % cover of all shrubs and herbaceous plants.
- Measure/estimate all trees and shrubs.
- Runs through summer 2010.

Map 5



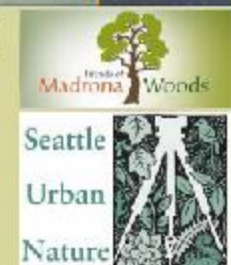
Madrona Woods Monitoring Plot Locations

Legend

- Park Property
- Parcel
- Trails

Monitoring Plots (2006)

- Shoreline
- Riparian
- Upland



Plots are in all three habitat types.



A fine day in January.